



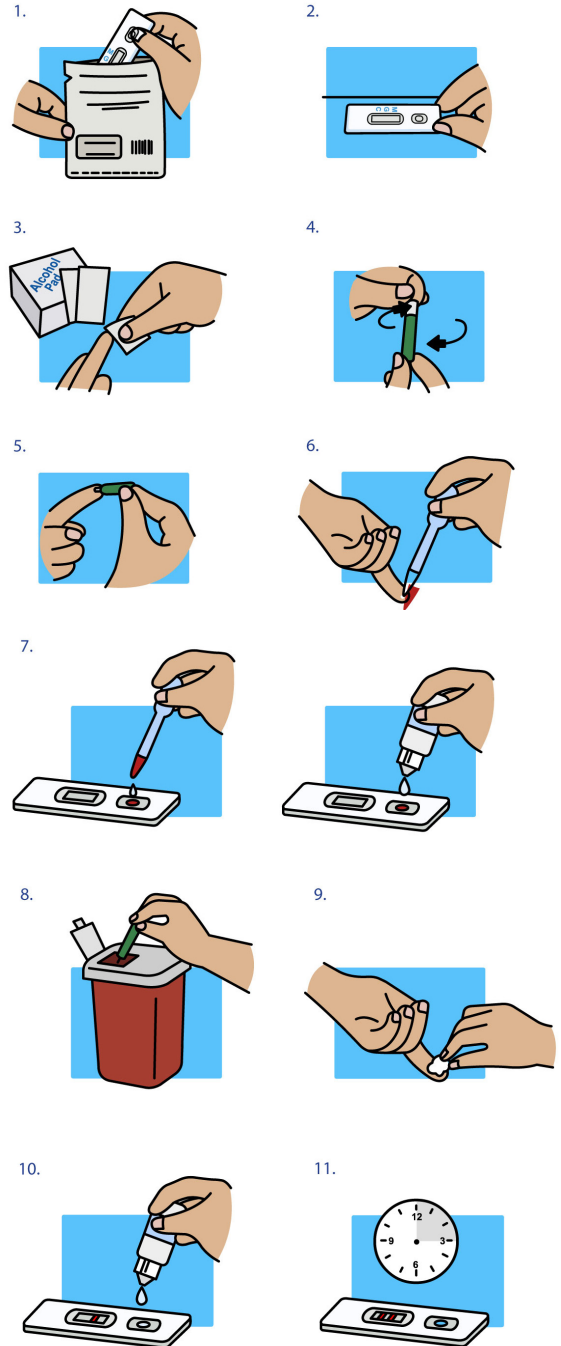
COVID-19 In-Home Antibodies Test Instruction Manual

User Manual and Result Interpretation:

1. Remove the test cassette from the sealed foil pouch and use it as soon as possible.
2. Place the test device on a clean and level surface
3. Open the Alcohol pad and disinfect your finger.
4. Take the safety lancet holding the body and twist off the protective cap until you feel it has been separated from the device. Don't pull, just twist.
5. Massage the finger to enhance the blood flow. Press the safety lancet platform firmly against the chosen site.
6. Collect the drop of blood obtained with the dropper
7. Drop the drop of blood to the specimen well (S) of the test device, then add 2 drops of sample buffer to the buffer well (B) immediately. Avoid air bubbles. If the cassette you received does not have both well (S and B) please drop the drop blood and the buffer in the same well (S).
8. After use of the lancet, replace the protective cap and then dispose of lancet in a suitable container.
9. Press on the wound on the finger with gauze or cotton.
10. Wait for the colored line or lines to appear. After 2 min, if the red colour has not moved across the test window or if blood is still present in the specimen well (S), add one additional drop of the sample buffer to the buffer well (B).
11. The result should be read in 10 minutes. Positive results may be visible as soon as 2 min.

DO NOT INTERPRET THE RESULT AFTER 15 MIN.

Continued on next page





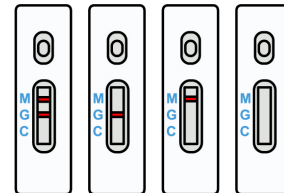
COVID-19 In-Home Antibodies Test Instruction Manual

Result Interpretation:

Invalid

- Any color lines that appears next to letter **M** and **G** but NOT appear next to letter **C**.
- JUST One line appearing next to letter **M** or **G**
- Non line appearing on the cassette

Result: You have to repeat the test with a new cassette.



Negative:

- A red line appears next to letter **C**.

Result: You don't have or had COVID-19.



Positive

- One line appears next to letter **C** and **G**.

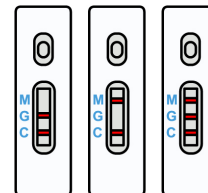
Result: You had COVID 19

- One line appears next to letter **C, M** and **G**.

Result: You have COVID-19. The infection is in process.

- One line appears next to letter **C** and **M**.

Result: You have COVID-19. The infection is in process.



Warning!!!

In all three positive cases above, we recommend you contact your health specialist or contact your country emergency services.